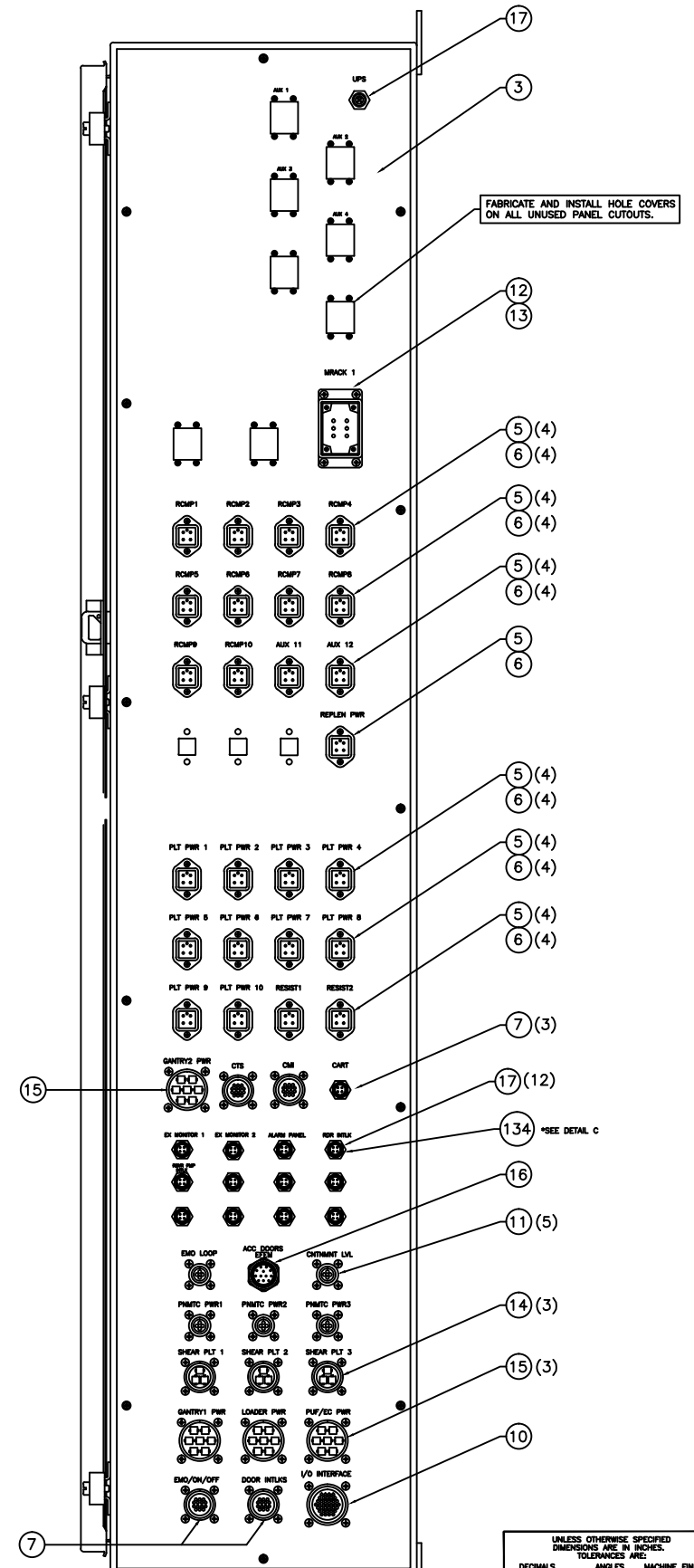
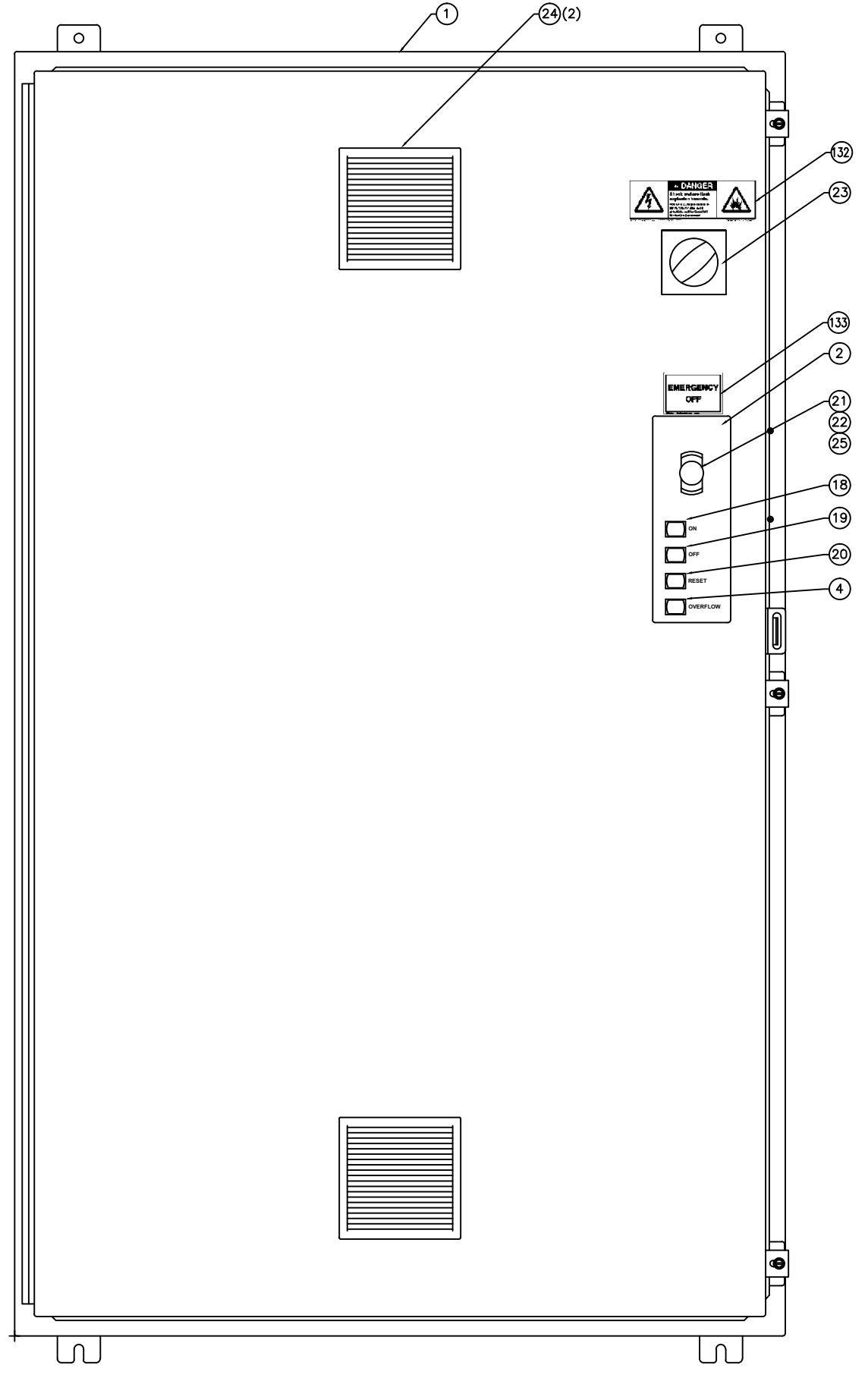
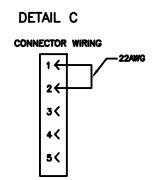
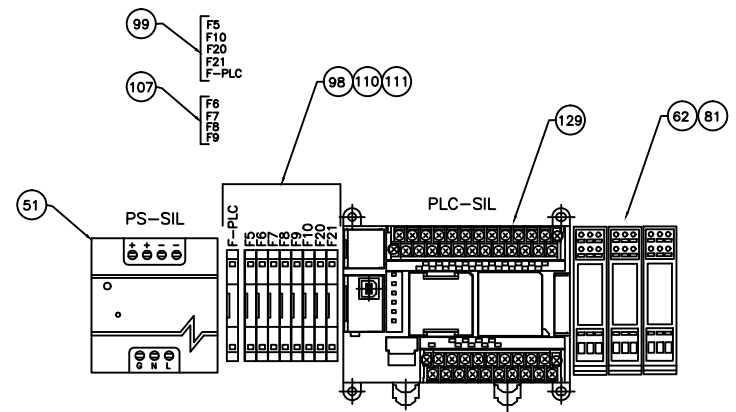
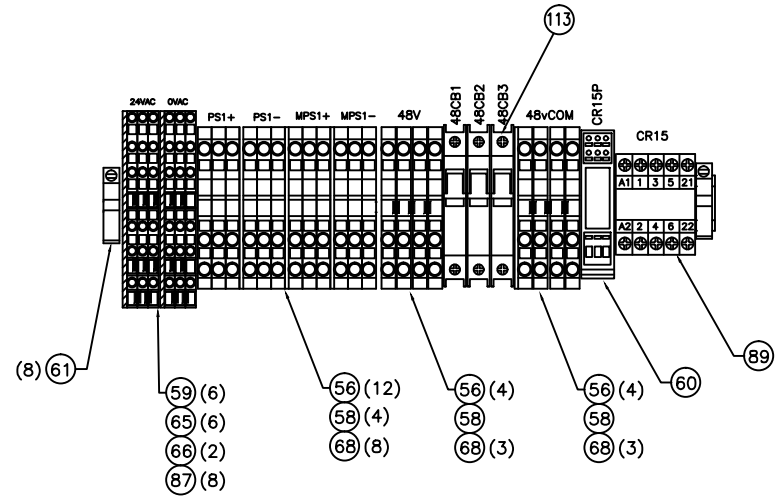
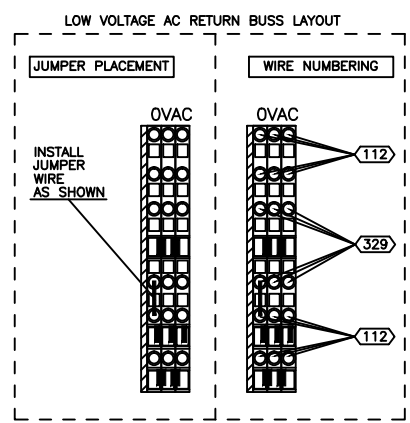
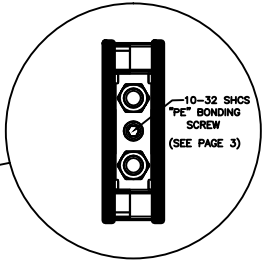
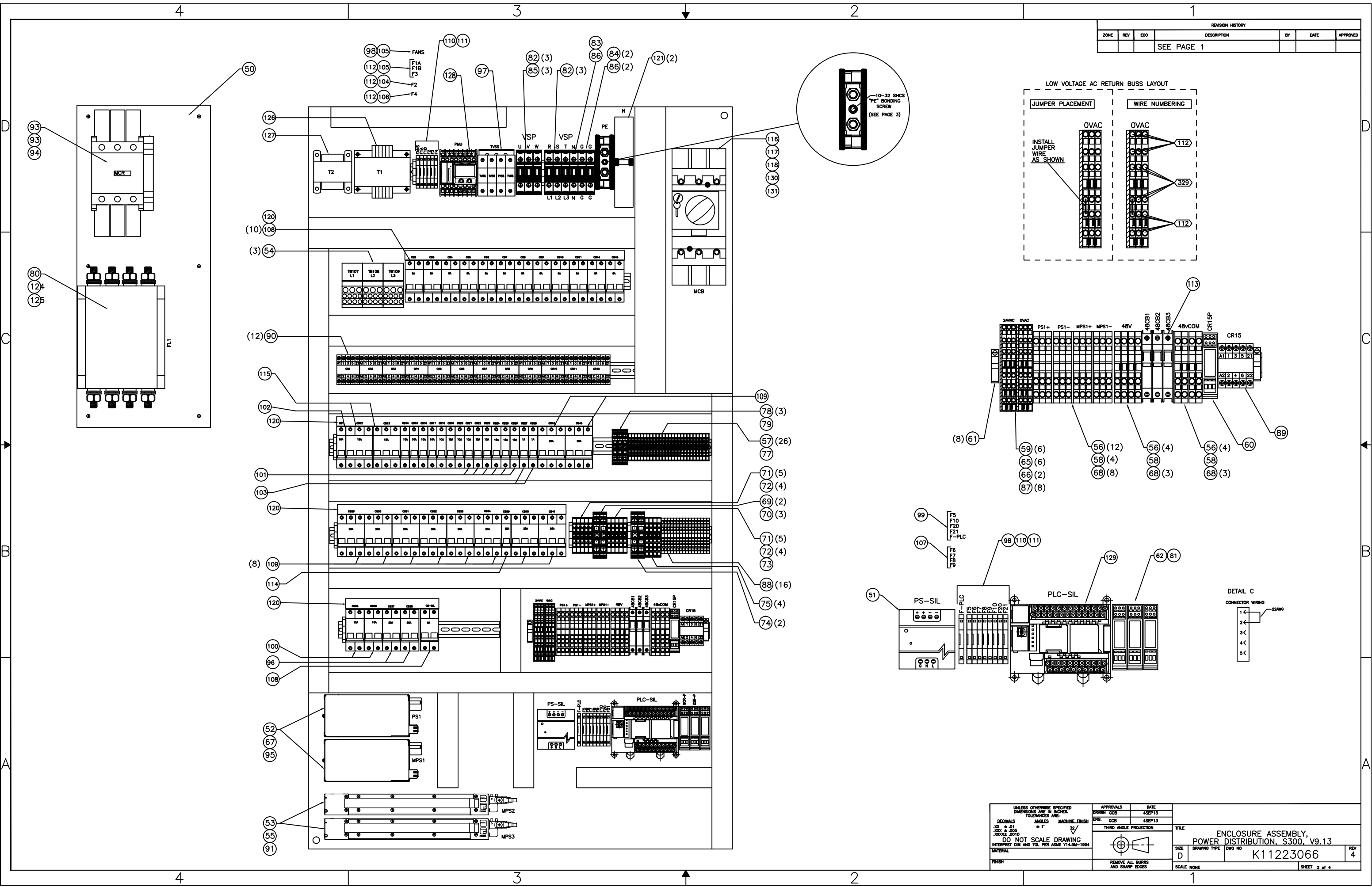


REVISION HISTORY						
ZONE	REV	EDD	DESCRIPTION	BY	DATE	APPROVED
	04	5395	ADDING CONNECTOR	SML	3/26/14	GCB



UNLESS OTHERWISE SPECIFIED DIMENSIONS ARE IN INCHES. TOLERANCES ARE: DECIMALS JOL ±.015 XXX ±.005 XXXX .0010		APPROVALS DRAWN GCS ENG. GCS	DATE 4SEP13 4SEP13	TITLE ENCLOSURE ASSEMBLY, POWER DISTRIBUTION, S300, V9.13
DO NOT SCALE DRAWING INTERPRET DIM AND TOL PER ASME Y14.5M-1994		THIRD ANGLE PROJECTION		SCALE NONE
REMOVE ALL BURRS AND SHARP EDGES		SIZE D		DWG NO K11223066
		SHEET 1 of 4		REV 4

REVISION HISTORY						
ZONE	REV	EDD	DESCRIPTION	BY	DATE	APPROVED
			SEE PAGE 1			



UNLESS OTHERWISE SPECIFIED DIMENSIONS ARE IN INCHES TOLERANCES ARE:		APPROVALS		DATE	TITLE
DECIMALS	ANGLES	ASSEMBLY	DATE	4SEP13	
3X ± .015	± .1°	ENGINEER	DATE	4SEP13	ENCLOSURE ASSEMBLY, POWER DISTRIBUTION, S300, V9.13
3X ± .005	± .1°	DRAWN	DATE	4SEP13	
3X ± .002	± .1°	CHECKED	DATE		K11223066
3X ± .001	± .1°	APPROVED	DATE		
DO NOT SCALE DRAWING INTERPRET DIM AND TOL PER ASME Y14.5M-1994		THIRD ANGLE PROJECTION		SCALE NONE	
MATERIAL		REMOVE ALL BURRS AND SHARP EDGES		SHEET 2 of 4	

4

3

2

1

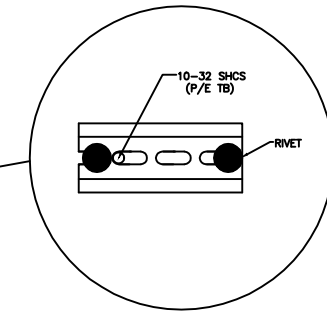
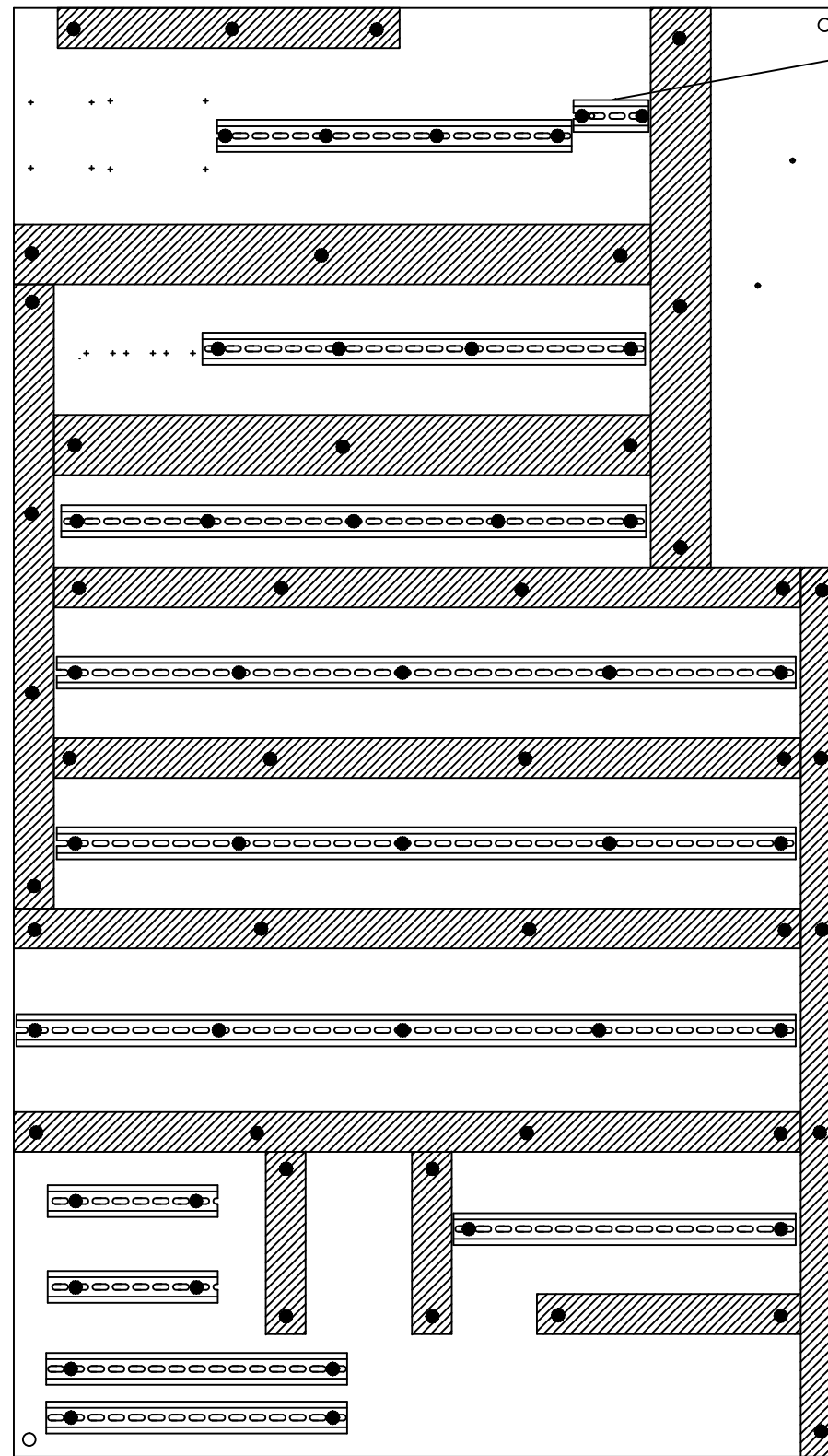
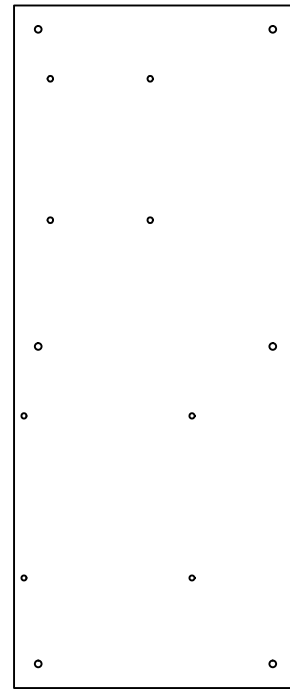
REVISION HISTORY						
ZONE	REV	EDD	DESCRIPTION	BY	DATE	APPROVED
			SEE PAGE 1			

D

C

B

A



UNLESS OTHERWISE SPECIFIED DIMENSIONS ARE IN INCHES. TOLERANCES ARE:		APPROVALS	DATE	TITLE	
DECIMALS	ANGLES	DRAWN GCS	4SEPT13	ENCLOSURE ASSEMBLY, POWER DISTRIBUTION, S300, V9.13	
.01 ±	± 1'	ENG. GCS	4SEP13	SIZE	DWG NO
.005 ±				D	K11223066
.0002 ±				SCALE	REV
MATERIAL				NONE	4
FINISH					SHEET 3 of 4

4

3

2

1

ITEM	PART NO.	DESCRIPTION	QTY
1	K12223761	ENCLSR,PWR DIST,MOD,STRATUS,V9.13	1
2	K17211996	PANEL,OPERATOR,RECESSED DOOR	1
3	K17223658	PANEL,SIDE,PWR DIST,V9.13	1
4	K50214145	PILOT LIGHT, RED PANEL MOUNT	1
5	K51003050	INSERT, 4F, SCR TERM, HAN A	26
6	K51003053	HOUSING, BULKHEAD MOUNT	26
7	K51003126	CONN, CPC 17-14 REV SEX FLANGED REC	5
8	K51003150	PIN, FEM 24-20AWG, TYPE III	100
9	K51003154	PIN, 16-12AWG FEM TYPE XI ROHS	31
10	K51003227	CONN, 37P FEM CPC 23-37 REV SEX FLA	1
11	K51003240	CONN, CPC 11-4 REV SEX FLANGED REC	5
12	K51003254	CONN, 6P FEM INSERT SCR TERM HAN E	1
13	K51003255	HOUSING, BULKHEAD MOUNTING SZ 6B	1
14	K51003313	CONN, CPC 17-3 REV SEX SQ FLANGE	3
15	K51003315	CONN, CPC 23-7 REV SEX FLANGED REC	4
16	K51203443	CONN, 9P RECEPTACLE W/18G PIGTAILS	1
17	K51212722	RECPT, MICRO DC 4P FM 22AWG BRKT MT	13
18	K52002090	SWITCH, PUSHBUTTON GREEN	1
19	K52002091	SWITCH, PUSHBUTTON WHITE	1
20	K52002092	SWITCH, PUSHBUTTON BLUE	1
21	K52002142	BUTTON, 40MM MUSHROOM EMO	1
22	K54001070	GUARD, EMO NARROW FLANGE	1
23	K54207080	OPERATOR, CKT BKR, THROUGH DOOR	1
24	K56216663	FAN, 24VDC, 5.83SQ, w/FILTER	2
25	K52002051	CONTACT, AUX 2 NC PUSH BUTTON	1
26	K77001064	WIRE, #22AWG VIO TEF EE UL1180	200
27	K77001141	WIRE, #14AWG BRN UL1180	50
28	K77001189	WIRE, #10AWG BROWN TYP-EE UL1180	100
29	K77001190	WIRE, #10AWG GRN/YEL TYP-EE UL1180	100
30	K77001191	WIRE, #10AWG RED TYP-EE UL1180	50
31	K77001192	WIRE, #10AWG BLACK TYP-EE UL1180	50
32	K77001193	WIRE, #16AWG BRN UL1180	100
33	K77001194	WIRE, #16AWG BLU TEF UL1180	100
34	K77001195	WIRE, #20AWG BLK UL1180	150
35	K77001196	WIRE, #20AWG RED TEF-EE UL1180	150
36	K77001197	WIRE, #20AWG WHITE UL1180	50
37	K77001199	WIRE, #2AWG BROWN UL1283 133/23	50
38	K77001200	WIRE, #2AWG LT BLUE UL1283 133/23	50
39	K77001201	WIRE, #2AWG GRN/YEL UL1283	50
40	K77001202	WIRE, #4AWG BROWN MTW UL1283	25
41	K77001203	WIRE, #4AWG LT BLUE MTW UL1283	25
42	K77001204	WIRE, #4AWG GRN/YEL MTW UL1283	25
43	K77001205	WIRE, #8AWG LT. BLUE TYP-EE UL1180	5
44	K77001206	WIRE, #10AWG WHT/BLU TEF UL1180	100
45	K77001207	WIRE, #10AWG BLUE TEF UL1180	100
46	K77001208	WIRE, #12AWG LT BLUE UL1180	100
47	K77001209	WIRE, #14AWG WHT/BLU TEF-EE UL1180	100
48	K77001210	WIRE, #16AWG LT BLUE TEF UL1180	100
49	K77001211	WIRE, #16AWG WHT/RED UL1180	100
50	K17212856	PANEL, SIDE MOUNTING	1
51	K21211523	PWR SUP, 115-230AC/24DC, 10A, DIN, F47	1
52	K21219788	PWR SUP, 24VDC, 600W, HWS	2
53	K21219787	PWR SUP, 48VDC, 1600W, RFE	2
54	K50002172	BLOCK, 1P DISTRIBUTION 250A	3
55	K11223659	ASSY, DIN MOUNT, (2) TDK RFE	1
56	K50002195	TERM BLOCK, 8MM 3P GREY	20
57	K50002197	TERM BLOCK, 6MM GREY	40
58	K50002199	END PLATE, 283 SERIES	6
59	K50002203	JUMPER, VERTICAL, INSULATED, 6MM	10
60	K50002204	RELAY, DPDT 24VDC	1
61	K50002215	TERM BLOCK, END STOP	20
62	K52219985	BASE, DIN, SAFETY RELAY, G7SA TYPE	3
63	K50002281	RACEWAY, 1-1/2" X 3" GREY W/COVER	18
64	K50002282	RAIL, DIN 35 X 7.5 (2 M LENGTH)	15
65	K50002343	TERM BLOCK, 5MM 3 DECK GREY	6
66	K50002344	TERM BLOCK, INTERMEDIATE PLATE ORG	2
67	K11223660	ASSY, DIN MOUNT, TDK HWS	2

ITEM	PART NO.	DESCRIPTION	QTY
68	K50201688	JUMPER, ADJACENT INSULATED	14
69	K50212918	TERM BLOCK, #10-2AWG, BLUE	2
70	K50212919	JUMPER, ADJACENT, 285 SERIES	3
71	K50212921	TERM BLOCK, #24-6AWG BLUE	10
72	K50212922	JUMPER, ADJACENT, 283 SERIES	8
73	K50212923	END PLATE, 283 SERIES GRAY	1
74	K50212924	TERM BLOCK, #10-2AWG GROUND 285 SER	2
75	K50212925	TERM BLOCK, #24-6AWG GROUND 283 SER	4
76	K50212926	END PLATE, 283 SERIES	1
77	K50204647	END PLATE, TERM BLOCK 281	1
78	K50206597	TERM BLOCK, 10MM 284 SERIES	3
79	K50206598	END PLATE, TERM BLOCK, 284 SERIES	1
80	K50207074	FILTER, EMI 3 POLE 160 AMP, BOLT	1
81	K52219984	RELAY, SAFTY, 4NOX2NC, 24DC, POS GUIDE	3
82	K50212728	TERM BLOCK, 8-2/0AWG, 20MM 2C GRY	6
83	K50212729	TERM BLOCK, 8-2/0AWG, 20MM 2C BLU	1
84	K50212731	TERM BLOCK, 8-2/0AWG, 20MM 2C GND	2
85	K50212732	TERM BLOCK, VOLT TAP 10AWG 16MM	3
86	K50212734	GUARD, FINGER GUARD 285 SERIES	6
87	K50214143	JUMPER, ADJACENT 280 SERIES	12
88	K50214144	TERMINAL BLOCK, 4 POSITION GROUND	16
89	K52002082	CONTACTOR, 3P 15A 24V 50/60HZ COIL	13
91	K17223661	SHIELD, TERMINAL, TDK RFE	1
92	K52207075	CONTACTOR, 3P 150A 24V 50/60HZ LUG	1
93	K52207076	AUX CONTACT, 1 NO/1 NC	2
94	K52207077	TERMINAL SHIELD (6) [fits K52207075]	1
95	K17223662	SHIELD, TERMINAL, TDK HWS	2
96	K54001018	CKT BKR, 2P 20A D-CURVE	2
97	K54001027	SURGE SUPPRESSOR, TRANSIENT VOLTAGE	1
98	K54001028	FUSE PLUG, 5 X 20 W INDICATOR 24VDC	13
99	K54001038	FUSE, 5A 5X20MM TIME LAG	4
100	K54205980	CKT BKR, 2P, 10A, D CURVE	2
101	K54001046	CKT BKR, 1-POLE 10A D-CURVE	13
102	K54001047	CKT BKR, 1P 16A D-CURVE MINIATURE	1
103	K54001049	CKT BKR, DIN MNT 1P 1A D-CURVE	2
104	K54001050	FUSE, 10A 5 X 20MM TIME LAG	1
105	K54001051	FUSE, 4A 5X20MM TIME LAG	3
106	K54001052	FUSE, 8A 5X20MM SLO-BLO	1
107	K54001053	FUSE, 3A TIME DELAY 5 X 20MM	4
108	K54001064	CKT BKR, 2P 6A D CURVE	13
109	K54001066	CKT BKR, 3P 20A D-CURVE	10
110	K54001083	SIDE PLATE, FUSE CARRIER TERM BLOCK	16
111	K54001084	TERM BLOCK, FUSE CARRIER 4C GY	16
112	K54001085	FUSE PLUG, 5 X 20MM, NEON 120V	3
113	K54201698	CKT BKR, 1P 15A DIN MOUNT	3
114	K54202645	CKT BKR, 1P 15A D-CURVE DIN MNT	1
115	K54202850	CKT BKR, 3-POLE 15A D-CURVE	2
116	K54207078	CKT BKR, 3P 150A, 24V 50/60HZ LUG	1
117	K54207095	TERMINAL SHIELD KIT	2
118	K54212725	SWITCH, AUX CKT BKR TYPE-SPDT	1
119	K54214146	CKT BKR, 3-POLE 30A D-CURVE	1
120	K57002046	BUSSBAR, 3 POLE 60 POSITON	3
121	K57208156	TERM BLK, 2 BOLT DIN, GREY W/COVERS	2
122	K57214139	LUG, 5/16" #2AWG WELD GREEN	6
123	K57214140	LUG, RING 1/4 GREEN #1AWG STR.	5
124	K57215157	TERM, RING, 3/8, 2-1AWG, NON INSUL	10
125	K59213883	BOOT, TERMINAL 29.21MM X 83.31 X 35.56	8
126	K66001006	TRANSFORMER, 250VA 120V-24V	1
127	K66001007	TRANSFORMER, 120X16, 80VA	1
128	K53222872	MONITOR, PWR QUALITY & ENERGY	1
129	K22216665	PLC, SIL3, 20SI, 8SO	1
130	K54220962	KeyLock Adapter, Main Breaker LOTO	1
131	K54220963	KeyLock, Main Breaker LOTO	1
132	K95214230	LABEL, DANGER, HI VOLT/ARC FLASH	1
133	K95208704	LABEL, EMO	1
134	K51201579	PLUG, MALE STRAIGHT, 5P, 18-24 AWG	1
135	K27223764	WIRE RUN LIST, P/D, S300, V9.13	REF
136	K84223701	SCHEM, PWR DIST, S300, V9.13	REF
137	K84225534	SCHEDULE, CIR BKR, S300 [11223066]	REF
138	K94225679	FIRMWARE, SIL PLC, ECD, V3.14	REF
139	K94225968	FIRMWARE, PQUBE, V9.13	REF

REVISION HISTORY						
ZONE	REV	ECO	DESCRIPTION	BY	DATE	APPROVED
			SEE PAGE 1			

REF	UNLESS OTHERWISE SPECIFIED DIMENSIONS ARE IN INCHES.	APPROVALS	DATE
REF	TOLERANCES ARE:	DRAWN GCS	4SEP13
REF	ANGLES	ENG GCS	4SEP13
REF	MACHINE FINISH		
REF	32	THIRD ANGLE PROJECTION	
REF	DO NOT SCALE DRAWING	TITLE	ENCLOSURE ASSEMBLY, POWER DISTRIBUTION, S300, V9.13
REF	INTERPRET DIM AND TOL PER ASME Y14.5M-1994	SIZE	DWG NO K11223066
REF	MATERIAL	D	REV 4
REF	FINISH	REMOVE ALL BURRS AND SHARP EDGES	SCALE NONE
			SHEET 4 of 4